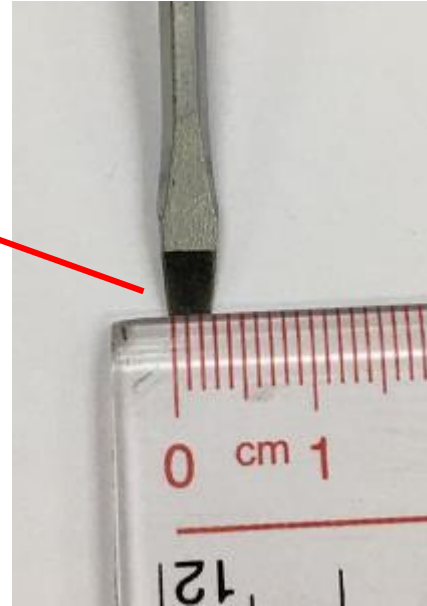
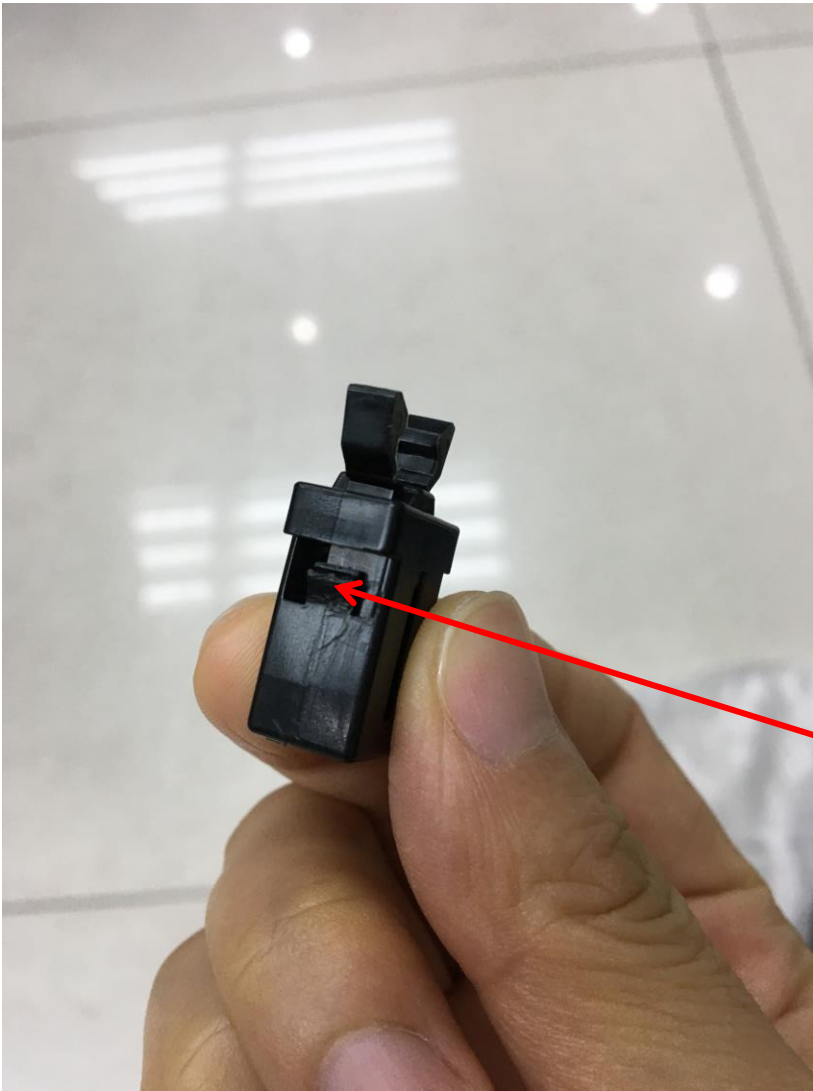


81200/104 Trash Can Latch replacement



Step 1: Find a small size slot type screwdriver.
The one we are using is 3mm wide.



Step 2-1: The latch has two snap-fasteners on both side of the latch.



Step 2-2: The snap-fasteners can be seen when turning the lid over.



Step 2-3: Press the top end of the screwdriver against one of the snap-fasteners, and then push hard to squeeze the latch out.



Step 3: Turn the lid back up, find a new latch, put it deep into the hole with a finger until a “clip” sound is heard.